

cattelan
italia

Fabrics

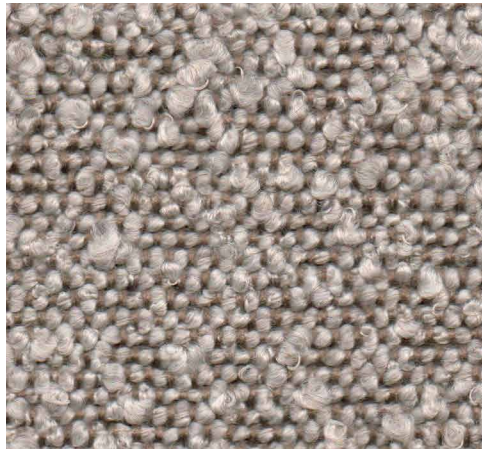
Tessuti Tejidos Tissus Stoff ткани 布



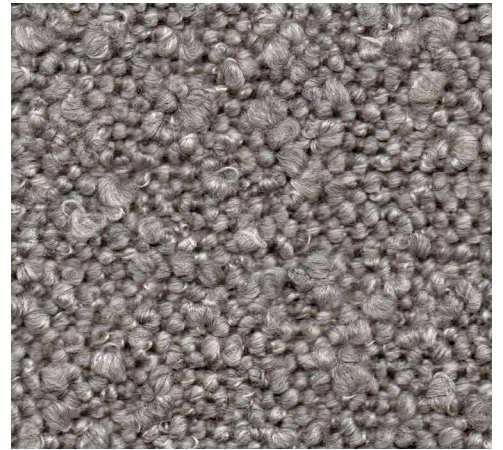
B240



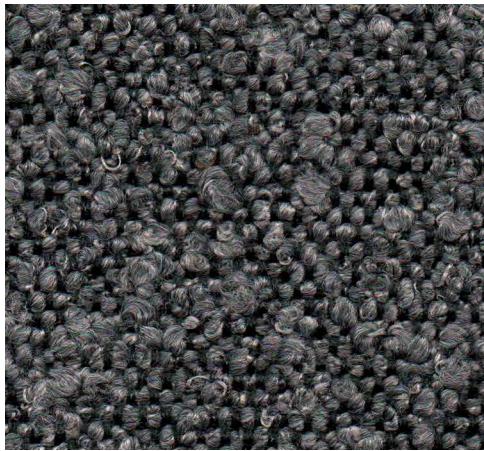
B241



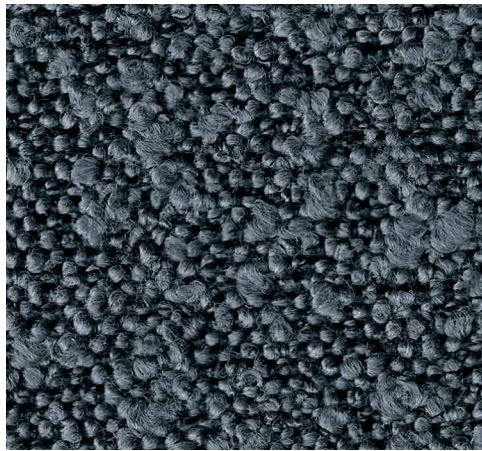
B242



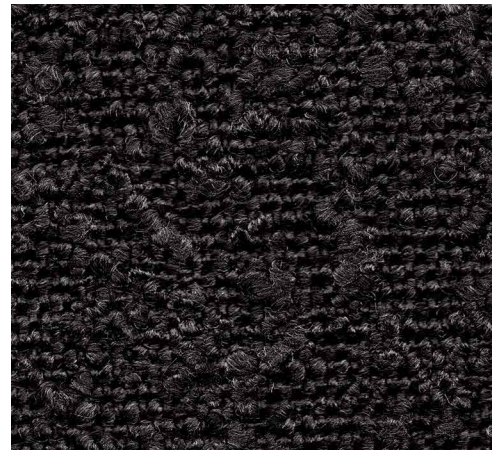
B243



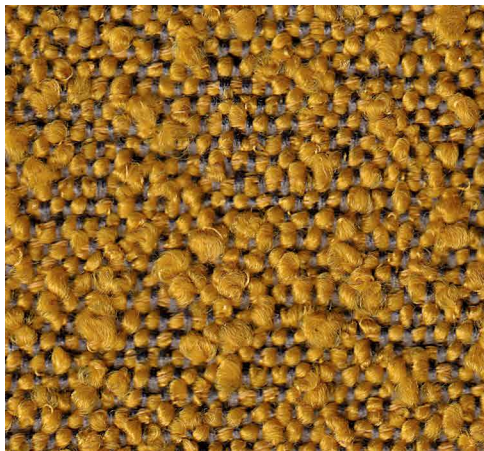
B244



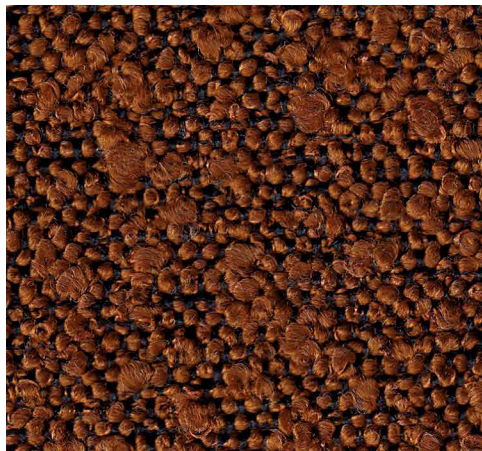
B245



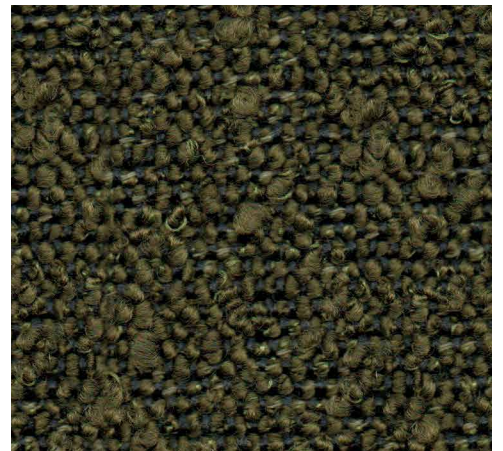
B246



B247



B248



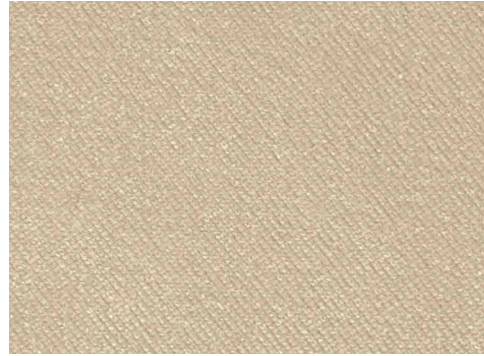
B249



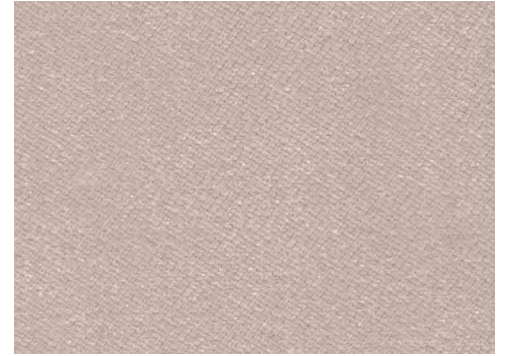
B921



B920



B922



B923



B924



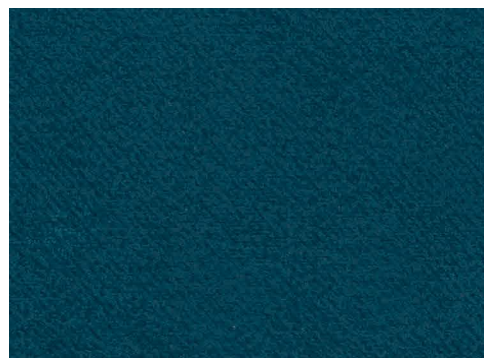
B925



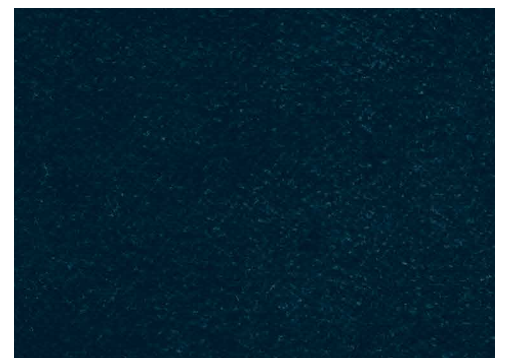
B926



B927



B928



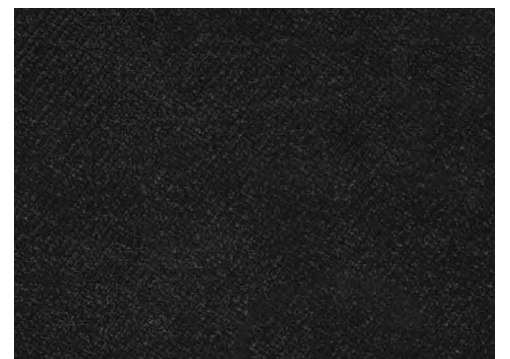
B929



B930



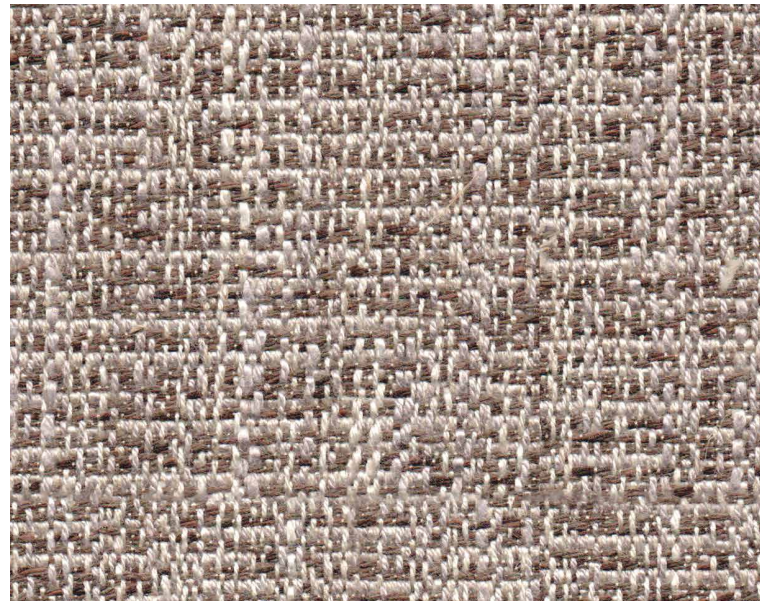
B931



B932



B810



B811



B730



B732



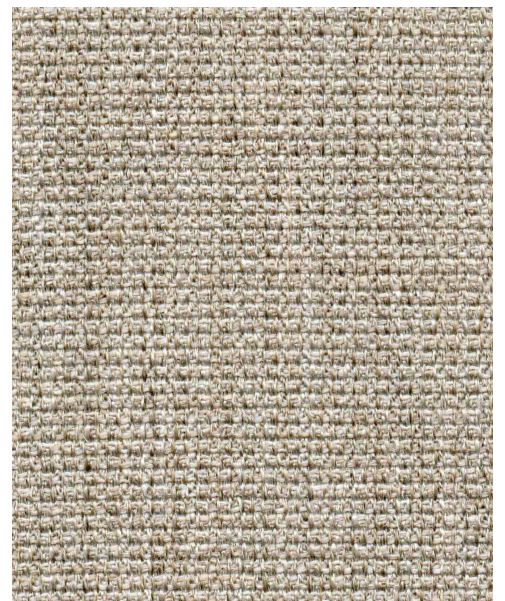
B731



B610



B714



B713

B240 B241 B242 B243 B244 B245 B246 B247 B248 B249



Composition

95% Polyester - 5% Acrylic

Maintenance



Weight (g/lm): 855 ± 5%

Pilling: 4

Martindale: 80.000

Applications & Features

BS 5852 Part I - Cigarette Test
EN 1021-1 - Cigarette Test
CA Tech. Bull. 117:2013 / NFPA 260 - Cigarette Test

OEKO-TEX® standard 100

This material respects the environment using the application of new technologies in the production process.

B920 B921 B922 B923 B924 B925 B926 B927 B928 B929 B930 B931 B932



Composition

100% Polyester

Maintenance



Weight (g/m²): 335 ± 5%

Pilling: 4/5

Martindale: 100.000

Applications & Features

CA Tech. Bull. 117:2013 - Cigarette Test

OEKO-TEX® standard 100

This material respects the environment using the application of new technologies in the production process.

B610



Composition

64% Viscose - 19% Linen
13% Cotton - 4% Polyester

Maintenance



Weight (g/lm): 820

Pilling: 4

Martindale: 35.000

Applications & Features

BS 5852 Part I - Cigarette Test
EN 1021-1 - Cigarette Test
CA Tech. Bull. 117:2013 - Cigarette Test

This material respects the environment using the application of new technologies in the production process.

B730 B731 B732



Composition

40% Viscose - 35% Cotton
14% Polyester - 11% Linen

Maintenance



Weight (g/lm): 1100

Pilling: 4

Martindale: 30.000

Applications & Features

BS 5852 Part I - Cigarette Test
EN 1021-1 - Cigarette Test
CA Tech. Bull. 117:2013 - Cigarette Test

This material respects the environment using the application of new technologies in the production process.

B713 B714



Composition

65% Acrylic - 35% Polyester

Maintenance



Weight (g/lm): 630

Pilling: 4/5

Martindale: 55.000

Applications & Features

BS 5852 Part I - Cigarette Test
EN 1021-1 - Cigarette Test
CA Tech. Bull. 117:2013 / NFPA 260 - Cigarette Test

This material respects the environment using the application of new technologies in the production process.

B810 B811



Composition

44% Cotton - 30% Viscose - 15% Polyester - 11% Linen

Maintenance



Weight (g/lm): 1050

Pilling: 4

Martindale: 45.000

Applications & Features

BS 5852 Part I - Cigarette Test
EN 1021-1 - Cigarette Test
CA Tech. Bull. 117:2013 - Cigarette Test

This material respects the environment using the application of new technologies in the production process.

Clean and Care Recommendations

- Frequent wash may affect the performance of the product.
- To remove dust use a vacuum cleaner.
- Any stain, spills or soiling should be cleaned up promptly with a neutral soap solution using a cloth in smooth circular movements.
- We do not accept responsibility for any damage resulting from inappropriate use, chemical cleaning or additional saturation.

cattelanitalia.com



cattelan
italia

CATTELAN ITALIA SPA - via pilastri 19 - 36010 Carrè / Vicenza - Italy
phone +39 0445 318711 - fax +39 0445 314289 - e-mail: info@cattelanitalia.com